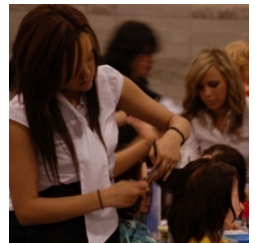
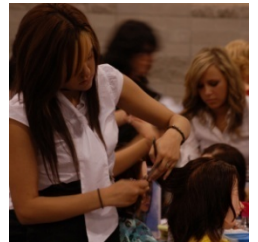


SkillsUSA for Advisors



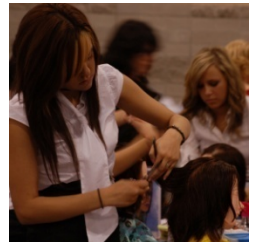
What is SkillsUSA?

- SkillsUSA is a partnership of students, teachers, and industry working together to ensure America has a skilled workforce.
- Students first professional association



What is SkillsUSA?

- For students, by students
- To you, it's a chore. To a student, it's a responsibility.



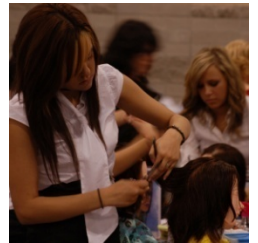
Chapter vs Section



Chapter = School



Section = Program



Structure of your SkillsUSA can be based on either. A sample structure chart can be found in the handbook.



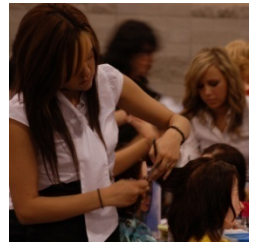
Membership vs Registration



Membership=Member

Registration=Event Attendee

Membership is not the same as registration. Attending an event does not necessarily mean you are a member.

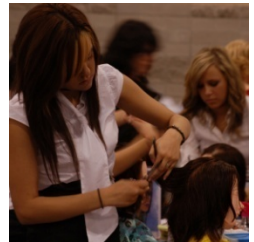


Basic Requirements

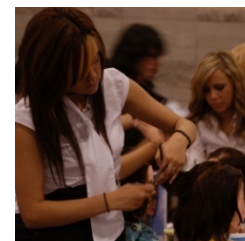
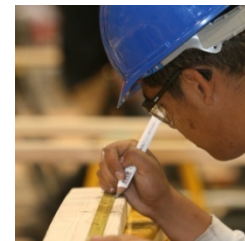
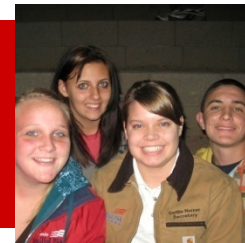
- Charter (including elected officer list)
- Constitution
- Program of Work
- State of Assurance
- Membership
 - 3 options

Basic Requirements

Due December 1



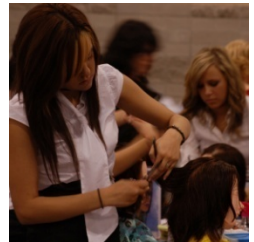
Membership



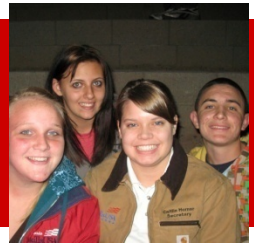
<p>Option #1 Per Person Membership</p>	<p>Option #2 Total Participation Plan</p>	<p>Option #3 Professional Membership</p>
<p>REQUIREMENTS -Minimum of 7 members</p> <p>DETAILS -Most basic of membership options -No contract/affiliation agreement -Flat rate of \$16/student, \$28.00/advisor</p> <p>INSTRUCTIONS -Submit online http://www.skillsusa-register.org/Login.aspx Deadline March 1</p>	<p>REQUIREMENTS -100% membership of the classroom, school, and/or district* -PDP and/or other approved educational resources must be purchased per student (min. \$3.95 + S&H per student)</p> <p>DETAILS -Fee based on number of students -Flat rate of \$28.00 per advisor</p> <p>-Please visit http://www.skillsusa.org/membership-resources/total-participation-plan for a complete pricing breakdown</p> <p>INSTRUCTIONS -SkillsUSA Louisiana must receive your TPP Contract prior to submitting members -TPP contract deadline February 1.</p> <p>-TPP Contract https://www.skillsusa.org/wp-content/uploads/2017/07/2017-18-TPP-Affiliation-and-Pricing.pdf</p>	<p>REQUIREMENTS -Instructors, administrators or business partners who would like to join SkillsUSA as a Professional member can affiliate by using the Form 26 registration form.</p> <p>DETAILS -Fee based on individual professional membership -Flat rate of \$28.00 per membership. This professional membership application is for individuals not joining SkillsUSA on a classroom or institutional membership roster. Membership year runs Sept. 1- Aug. 31 for students, and one year from the date of joining for Professionals.</p> <p>-Please visit http://www.skillsusa-register.org/rpts/JoinAsProfessional.aspx</p> <p>INSTRUCTIONS -Follow instructions given on form 26</p>

Eligibility Requirement

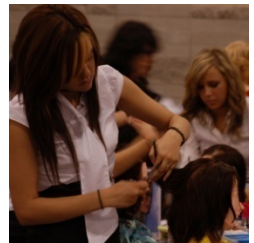
- A SkillsUSA Program (i.e. welding, electronics, etc) must attend either FLC and/or active to be eligible to compete at the SkillsUSA Louisiana Championships
- Starting in 2016, another conference opportunity will be added to the eligibility options



Websites



- www.skillsusa.org
 - Membership Kit, Join tab-Create sign in and password, download CEP Teacher Guide and Program of work, Advisor training modules, info on national events, lesson plans
- www.skillsusala.org
 - State specific information
- www.skillsusa-register.org
 - Membership and registration



August/September

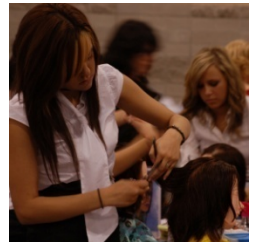


- **Meet w/ School Administrators**

- 1. What are school policies regarding student organizations such as SkillsUSA?
- 2. What are the rules about off-campus trips? (including transportation, funding, chaperones, overnight, etc)



- **Download from SkillsUSA.org Chapter Excellence Program CEP – Teacher Guide**

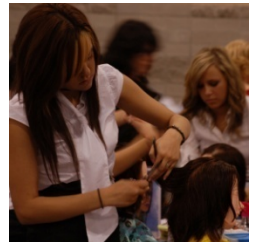


- **Introduce Students to SkillsUSA**
- **Elect Chapter Leaders**



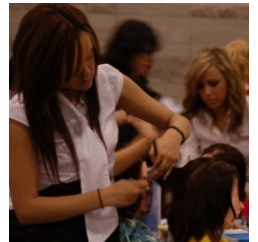
September

- **Choose Membership Plan and submit membership**
- **Plan Program of Work**
- **Register for Fall Leadership Conference**
- **Submit new Chapter Requirements to SkillsUSA Louisiana**



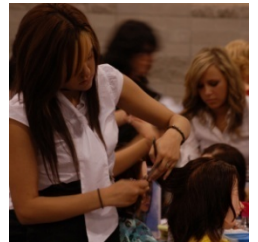
October

- **Attend Fall Leadership Conference**
- **Continue local chapter Program of Work**
- **There are seven areas that each member can be assigned to a committee to accomplish the SkillsUSA Program of Work**



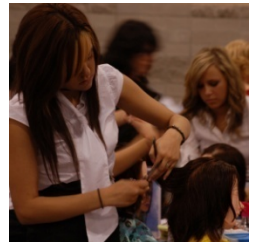
November

- **Continue the SkillsUSA Program of Work**



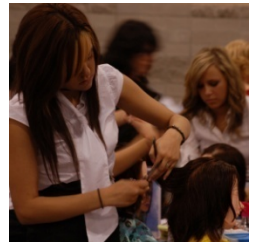
December/January

- Continue the SkillsUSA Program of Work
- School level competitions



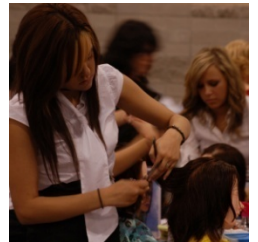
February

- **SkillsUSA Week**
- **Attend Regional Competitions**
- **Register for SkillsUSA Louisiana Championships**
- **Submit membership additions**



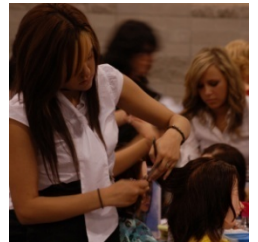
March/April

- **Get ready for the SkillsUSA Louisiana Championships**
- **Attend SkillsUSA Louisiana Championships**



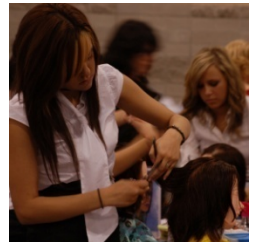
April/May

- End of the Year Celebration
- Prepare for National Leadership and Skills Conference



June

- **Attend National Leadership and Skills Conference**



Questions?

- www.skillsusala.org
- www.skillsusa.org
- 225-603-5664

